



# Monthly Report · July 2021




## Day Ahead & Intraday Electricity Markets – Greek Bidding Zone

## GENERAL TERMS AND CONDITIONS OF DATA USE

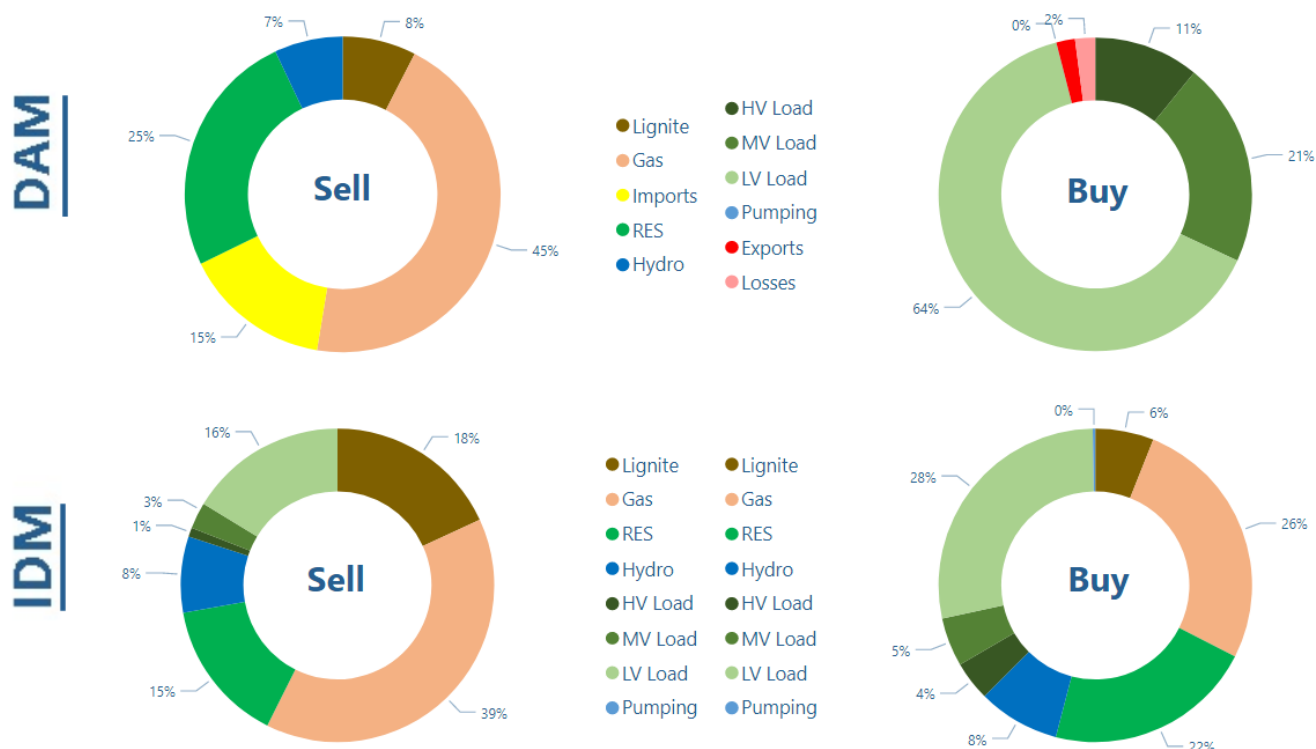
Use of the market report content is under the [EnExGroup website Terms of Use](#).

|   |    |
|---|----|
| Summary .....                           | 4  |
| 1. DAM .....                            | 5  |
| Market Clearing Price (MCP)             |    |
| Volumes, technologies and order types   |    |
| Interconnections                        |    |
| 2. IDM .....                            | 17 |
| Market Clearing Prices (MCP)            |    |
| Volumes, technologies and order types   |    |
| 3. DAM & IDM · Aggregated Overview..... | 21 |
| Final Market Schedules                  |    |
| Domestic Production                     |    |
| Domestic Consumption                    |    |
| Domestic Consumption per Voltage level  |    |
| 4. Annex.....                           | 25 |
| Definitions                             |    |
| Data Sources                            |    |
| Market Details                          |    |

## Summary

| Jul 2021<br>Jun 2021<br>Jul 2020   |                | <u>DAM</u>               | <u>LIDA1</u>   | <u>LIDA2</u>    | <u>LIDA3</u>    |
|--|----------------|--------------------------|----------------|-----------------|-----------------|
|   | Price<br>€/MWh | 101.86<br>83.47<br>41.14 | 97.68<br>82.97 | 100.91<br>83.62 | 111.27<br>87.63 |
|   | Volume<br>GWh  | 5,667<br>4,325<br>4,953  | 38.2<br>42.4   | 18.8<br>31.5    | 26.5<br>15.6    |
|  | Value<br>M €   | 589.9<br>374.5<br>195.9  | 4.23<br>3.96   | 1.91<br>2.77    | 3.10<br>1.55    |

## Volume mix



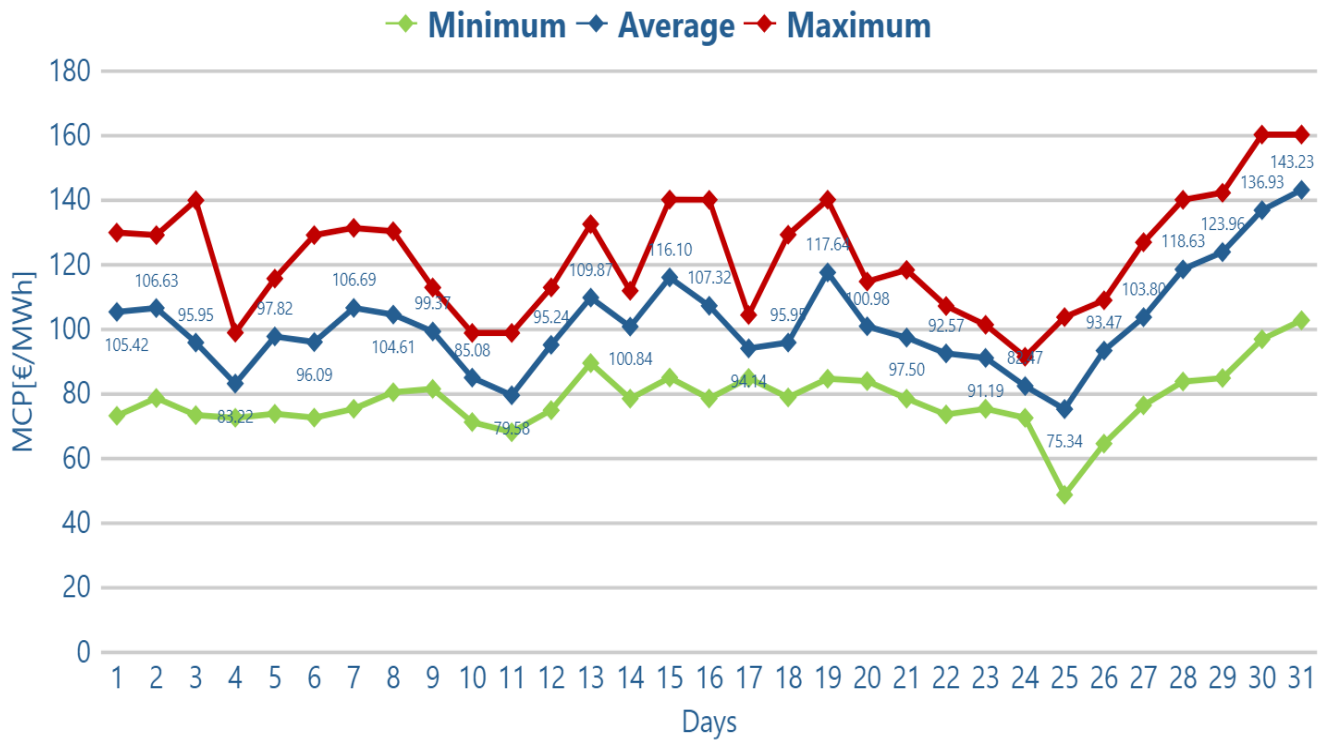
# 1. DAM

**Market Clearing Price (MCP)**

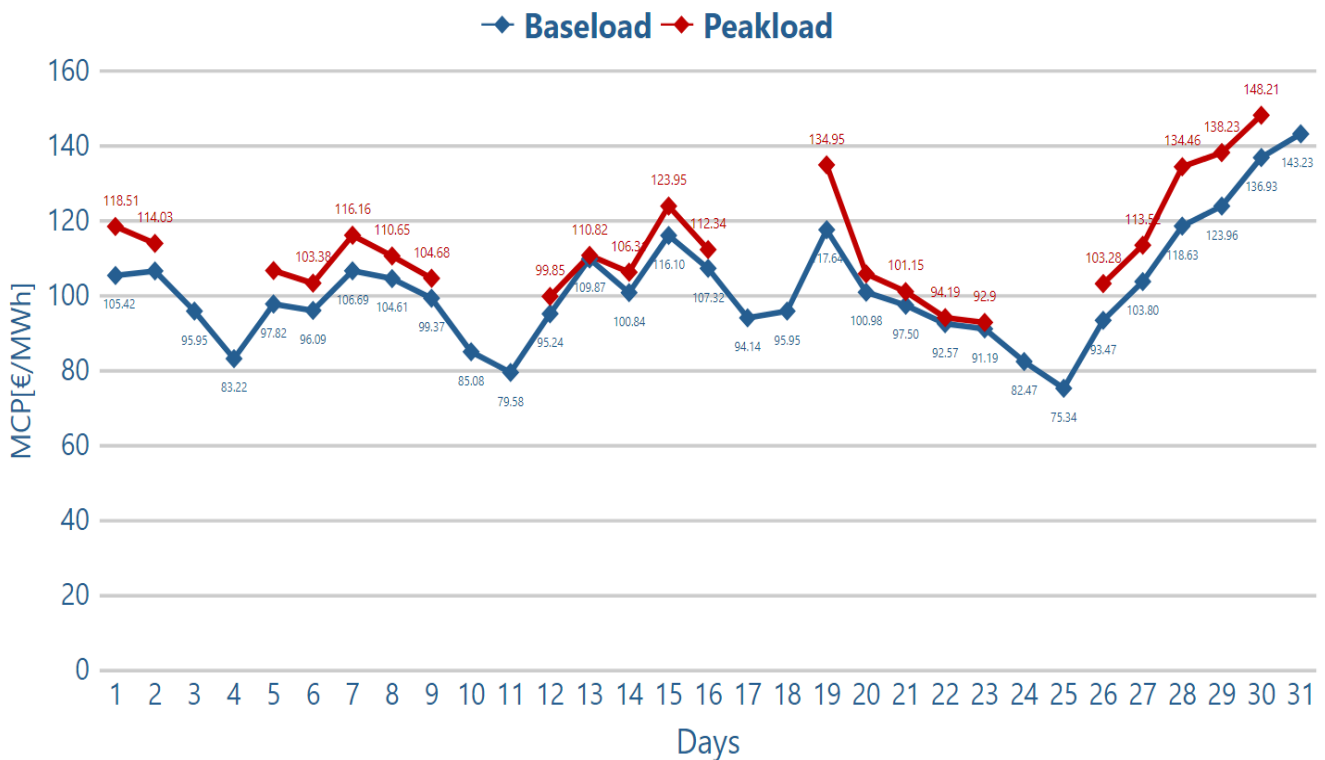
**Volumes, technologies and order types**

**Interconnections**

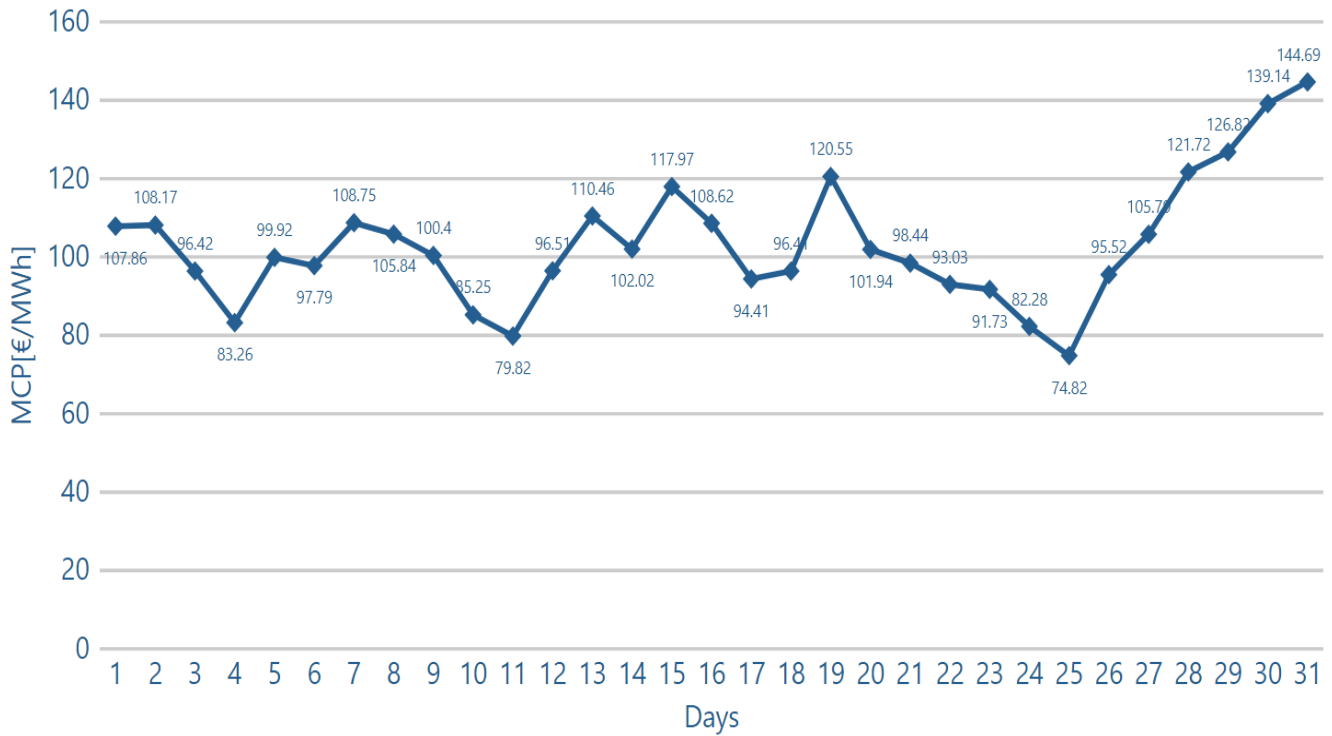
## 1.1. Daily MCP data of GR BZ



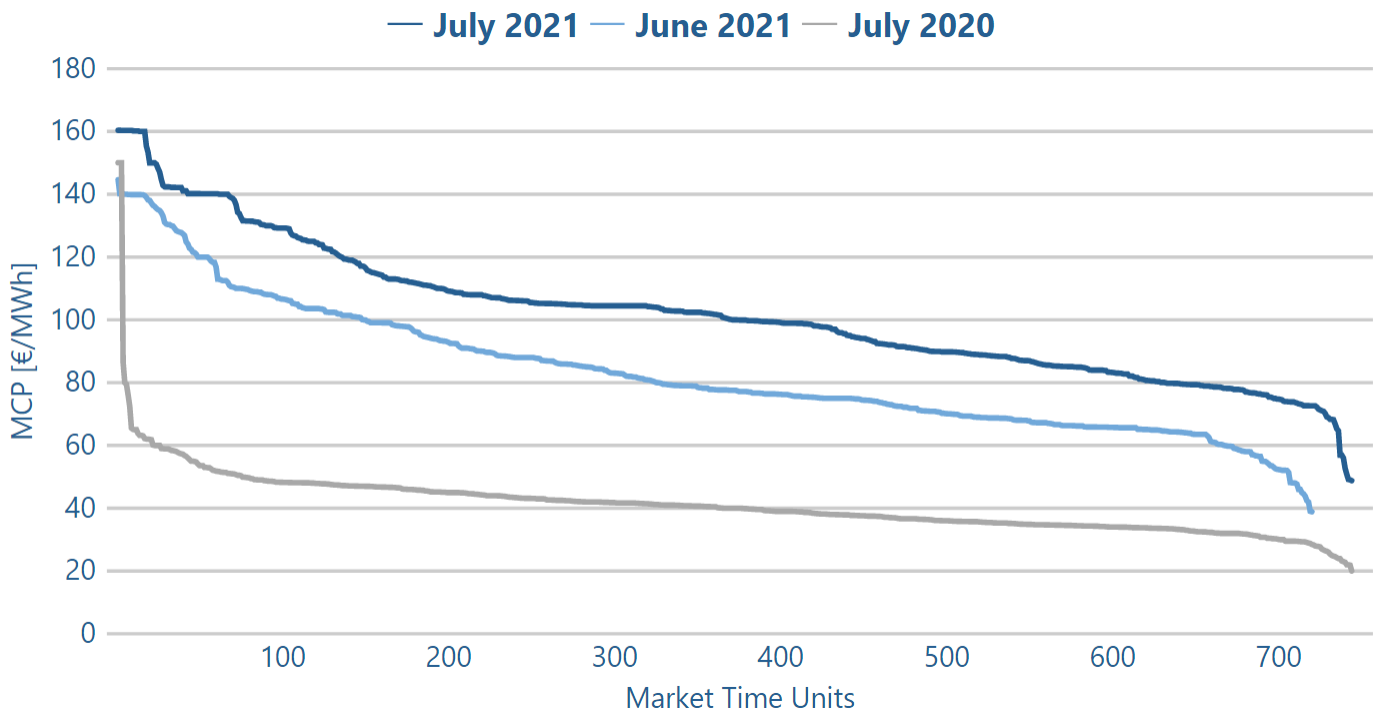
## 1.2. Daily average prices



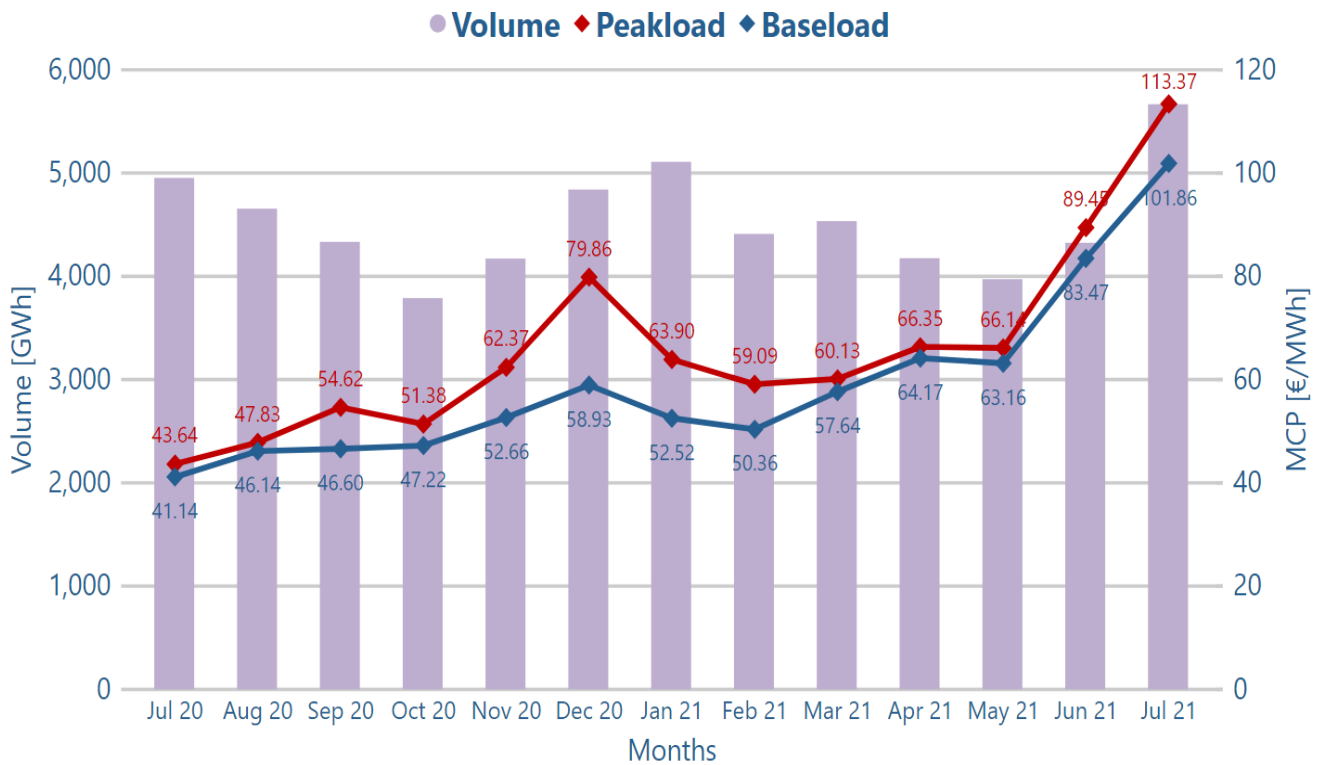
### 1.3. Daily weighted average baseload price



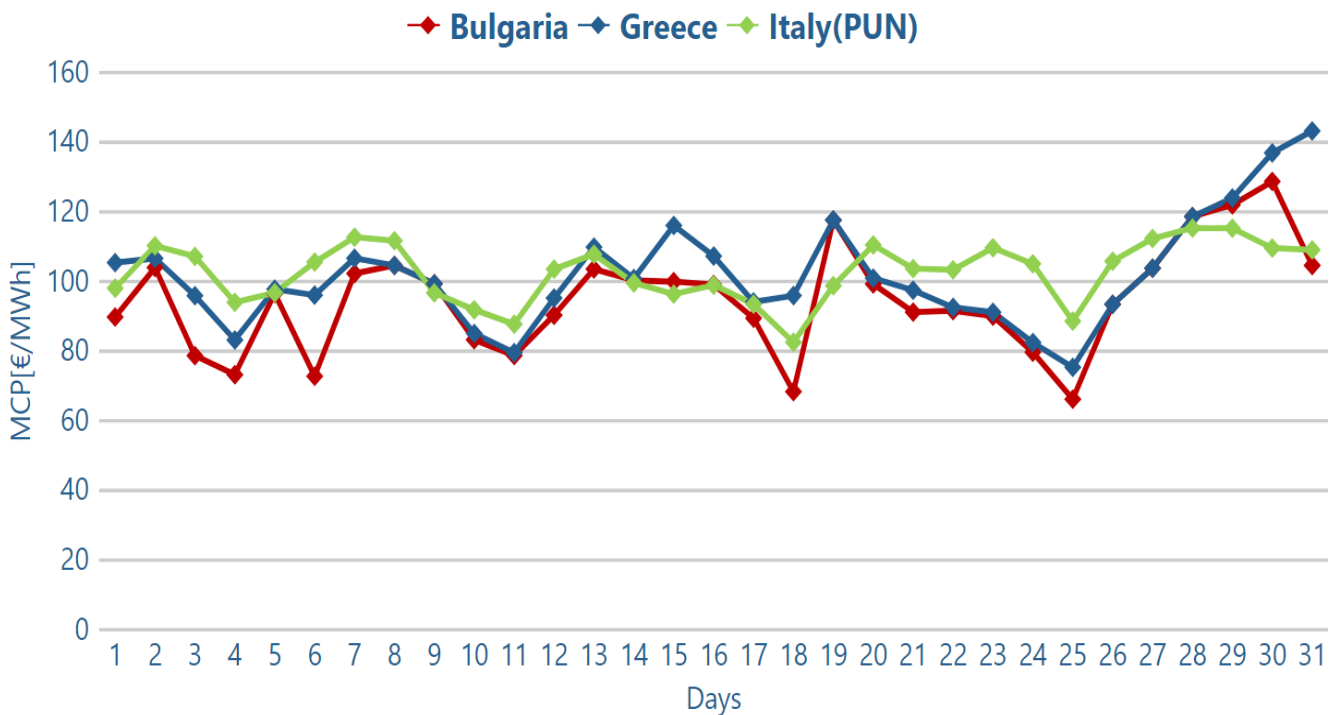
### 1.4. MCP duration curve



## 1.5. Monthly volume and average prices

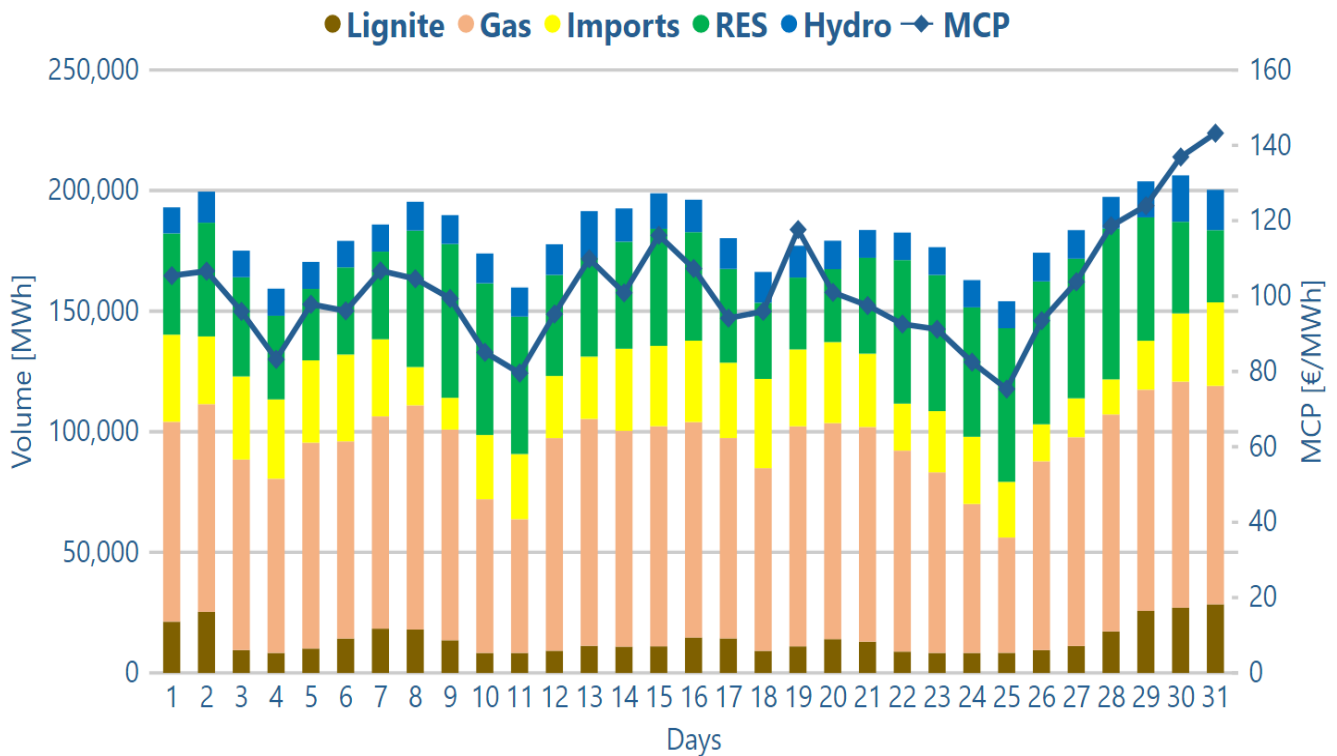


## 1.6. Daily average MCP of GR, IT, BG

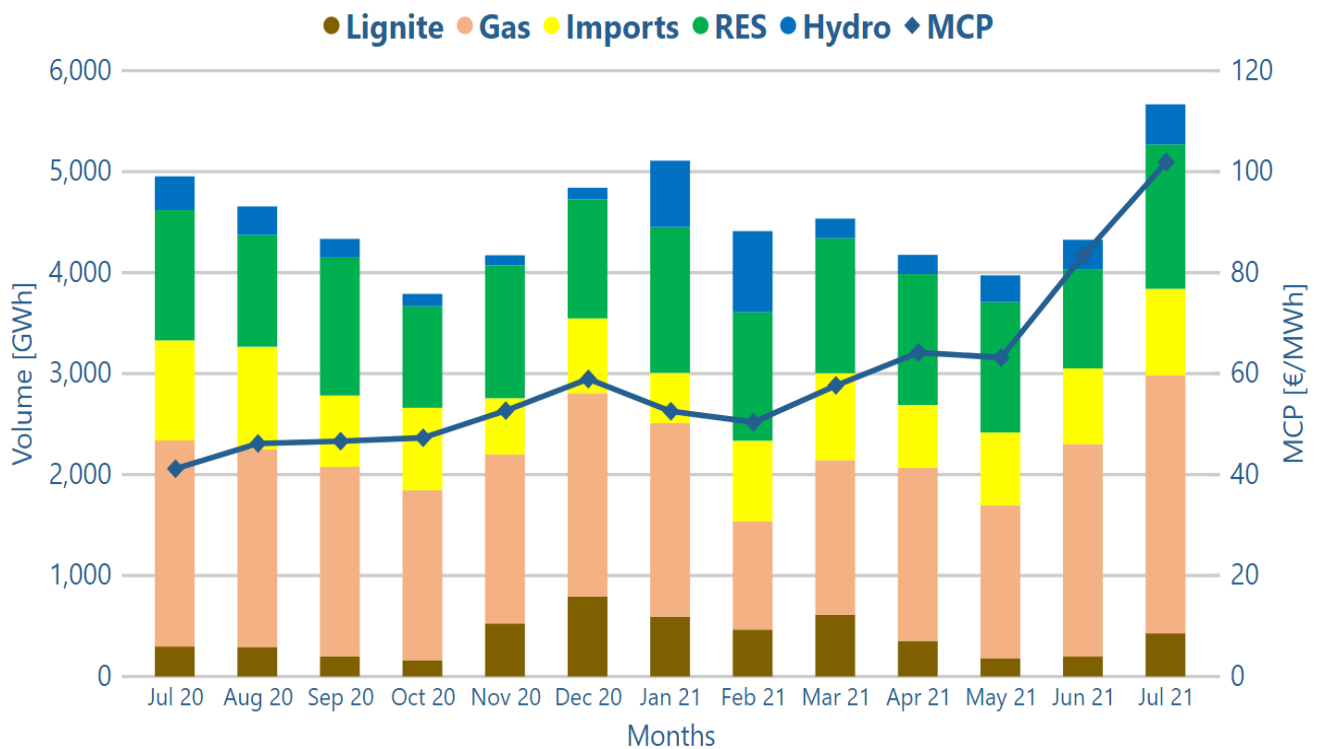




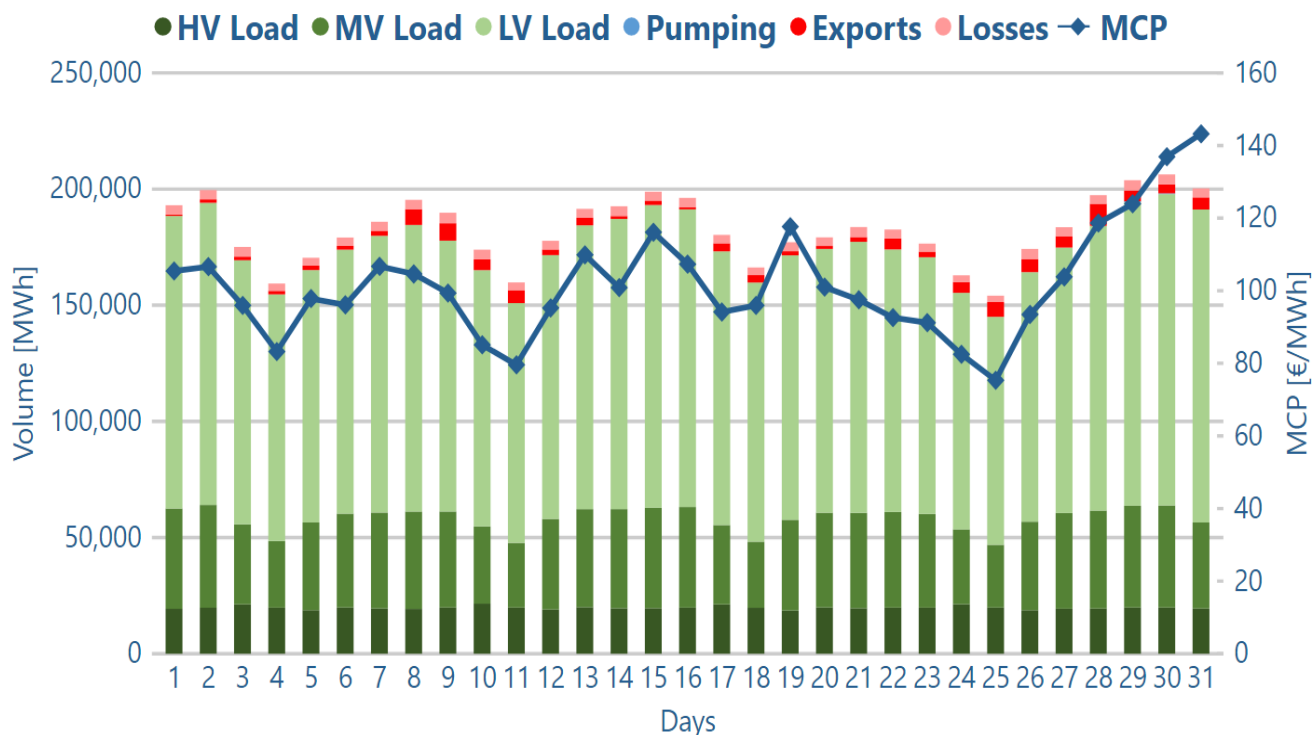
## 1.7. Volume mix of sell side per day



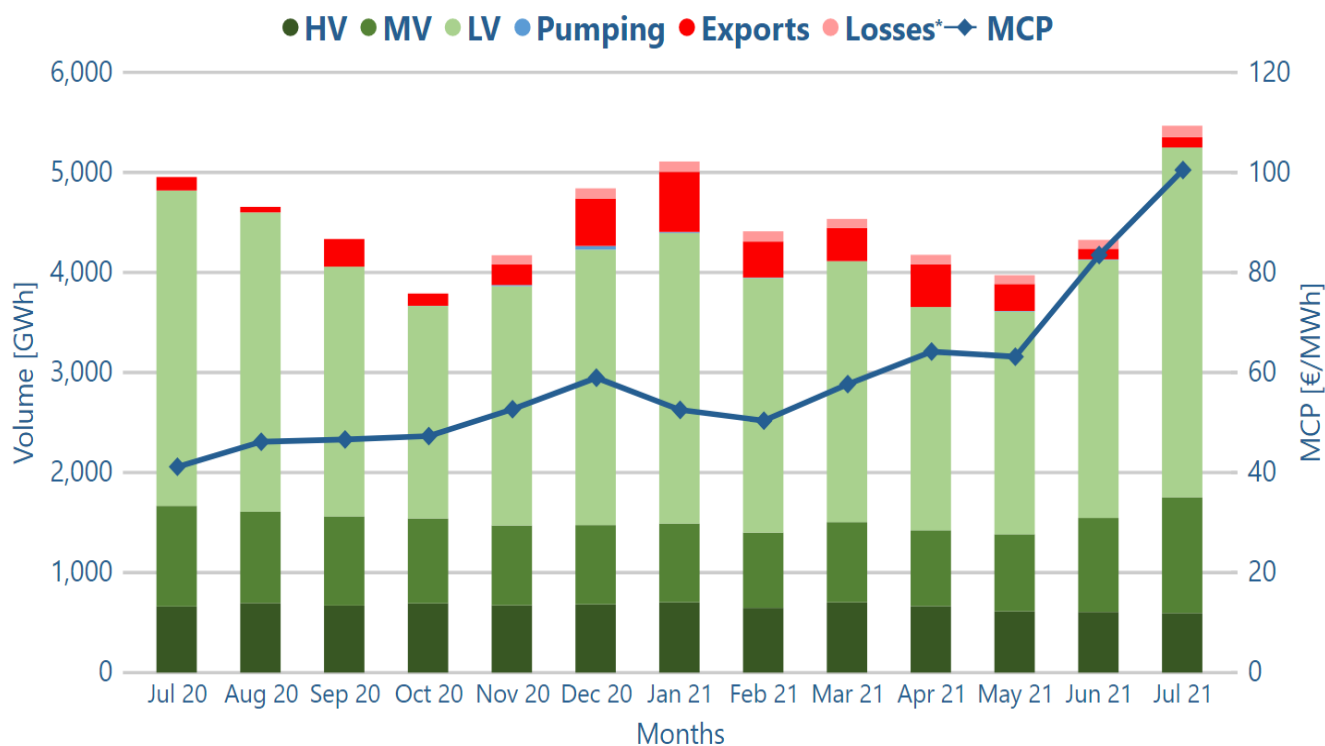
## 1.8. Volume mix of sell side per month



## 1.9. Volume mix of buy side per day



## 1.10. Volume mix of buy side per month



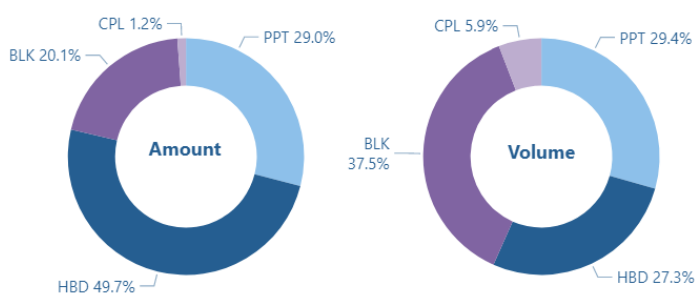
\*Data for losses are considered from November 2020

## 1.11. Table with MCP and volume per month

| Year | Month     | Minimum MCP<br>[€/MWh] | Average MCP<br>[€/MWh] |        | Maximum MCP<br>[€/MWh] | Peakload MCP<br>[€/MWh] |        | Volume [Gwh] |
|------|-----------|------------------------|------------------------|--------|------------------------|-------------------------|--------|--------------|
| 2020 | July      | 20.02                  | 41.14                  | ↑ 21%  | 150.05                 | 43.64                   | ↑ 24%  | 4,953        |
| 2020 | August    | 0.00                   | 46.14                  | ↑ 12%  | 112.17                 | 47.83                   | ↗ 10%  | 4,655        |
| 2020 | September | 21.60                  | 46.60                  | ↗ 1%   | 104.41                 | 54.62                   | ↑ 14%  | 4,334        |
| 2020 | October   | 0.00                   | 47.22                  | ↗ 1%   | 110.01                 | 51.38                   | ↘ -6%  | 3,789        |
| 2020 | November  | 17.03                  | 52.66                  | ↑ 12%  | 110.14                 | 62.37                   | ↑ 21%  | 4,172        |
| 2020 | December  | -0.01                  | 58.93                  | ↑ 12%  | 140.01                 | 79.86                   | ↑ 28%  | 4,840        |
| 2021 | January   | 1.50                   | 52.52                  | ↓ -11% | 98.02                  | 63.90                   | ↓ -20% | 5,109        |
| 2021 | February  | -0.01                  | 50.36                  | ↘ -4%  | 90.96                  | 59.09                   | ↘ -8%  | 4,411        |
| 2021 | March     | 0.00                   | 57.64                  | ↑ 14%  | 110.60                 | 60.13                   | ↗ 2%   | 4,535        |
| 2021 | April     | 10.40                  | 64.17                  | ↑ 11%  | 101.73                 | 66.35                   | ↑ 10%  | 4,176        |
| 2021 | May       | 0.00                   | 63.16                  | ↘ -2%  | 104.13                 | 66.14                   | ↘ -0%  | 3,972        |
| 2021 | June      | 38.88                  | 83.47                  | ↑ 32%  | 144.64                 | 89.45                   | ↑ 35%  | 4,325        |
| 2021 | July      | 48.79                  | 101.86                 | ↑ 22%  | 160.37                 | 113.37                  | ↑ 27%  | 5,667        |

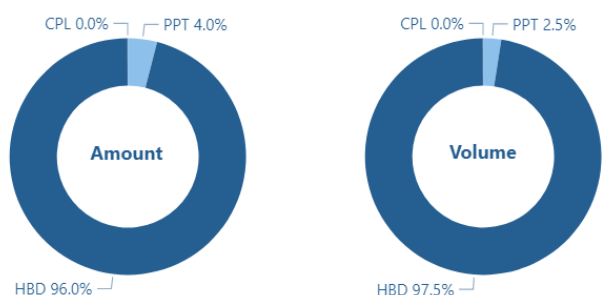
## 1.12. Trades per Order type

### Sell Side



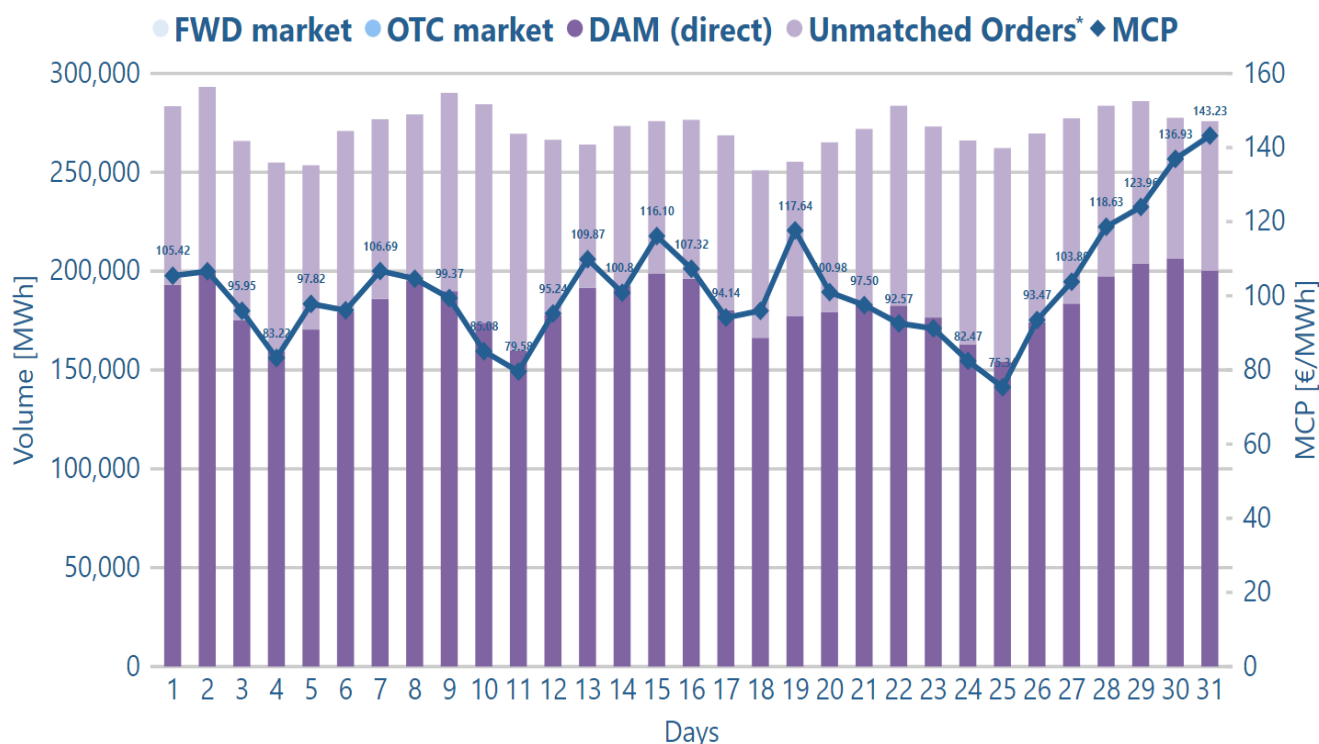
|              | PPT   | HBD   | BLK   | CPL |
|--------------|-------|-------|-------|-----|
| Amount       | 18263 | 31261 | 12680 | 736 |
| Volume [GWh] | 1665  | 1545  | 2125  | 332 |

### Buy Side



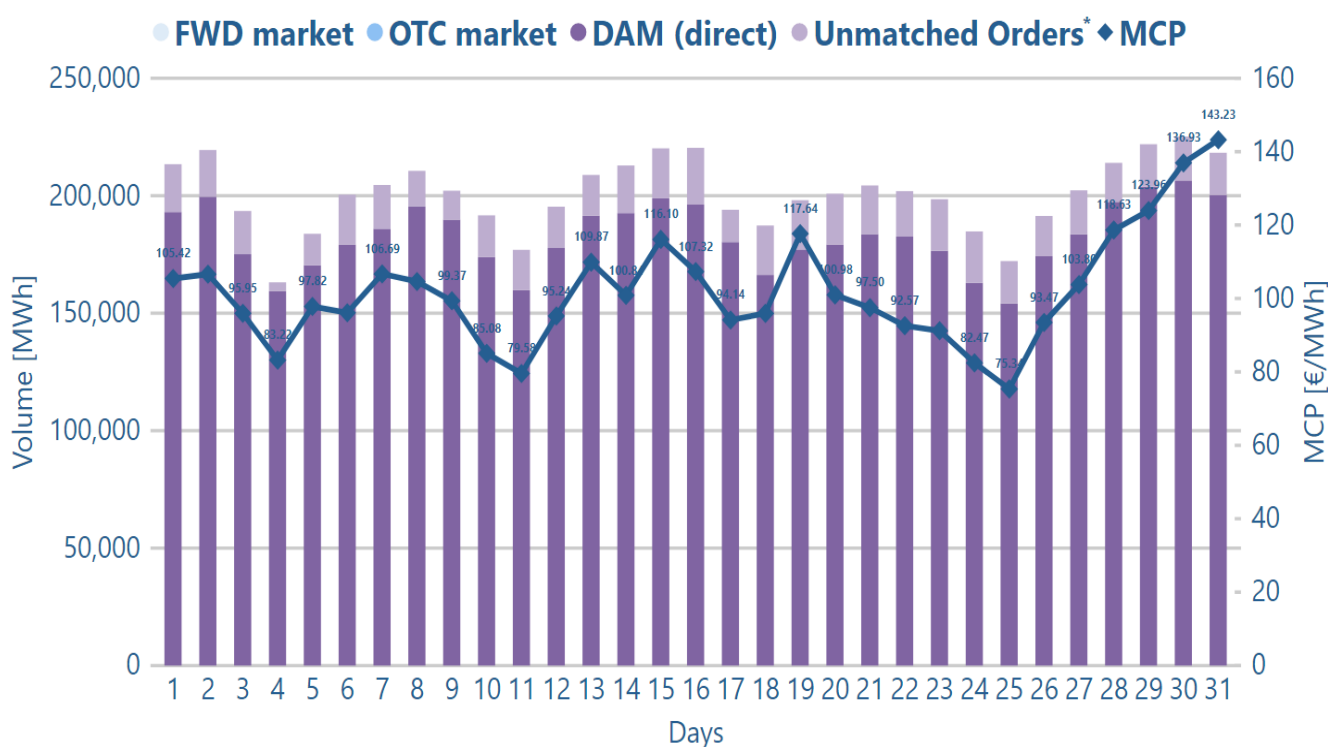
|              | PPT  | HBD   | CPL |
|--------------|------|-------|-----|
| Amount       | 2309 | 55358 | 22  |
| Volume [GWh] | 139  | 5525  | 2   |

### 1.13. Total volume and traded volume per Market Source of sell orders



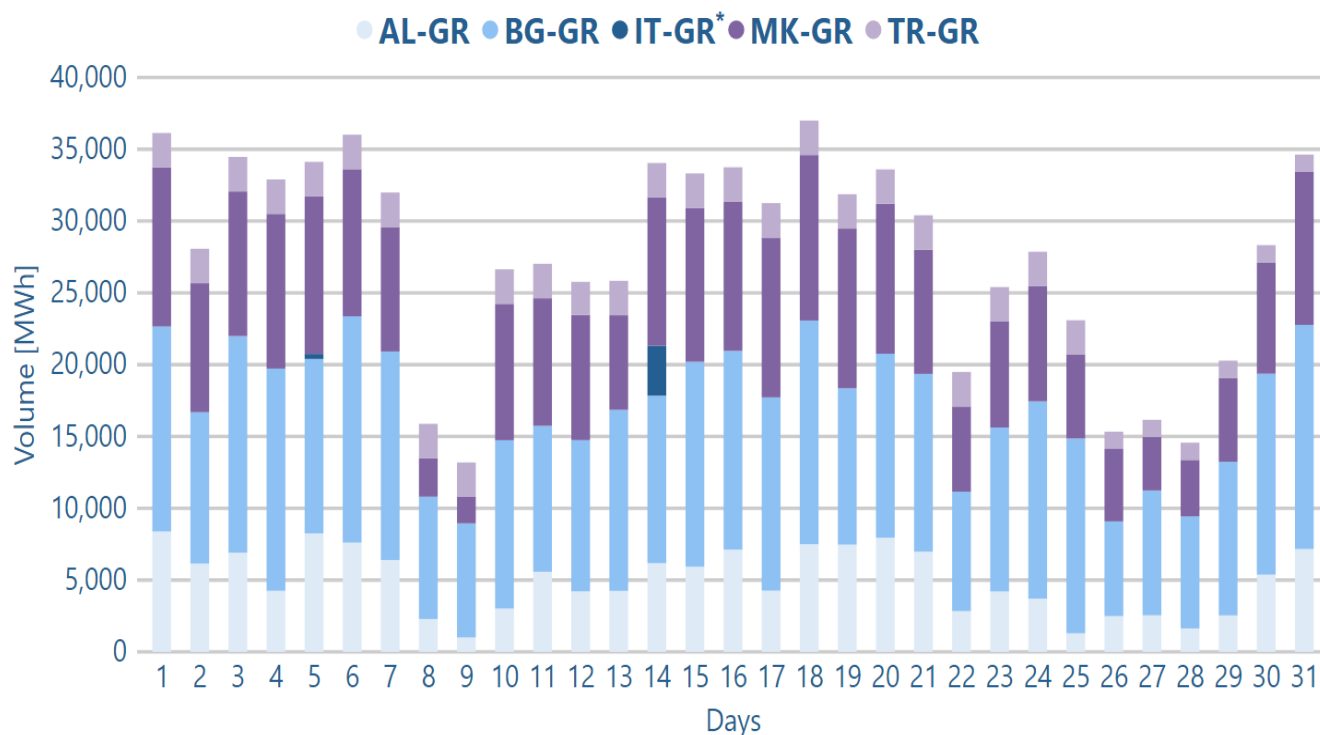
\*The Unmatched Orders include all sell orders that have not been included in the algorithm (excluding block orders).

### 1.14. Total volume and traded volume per Market Source of buy orders



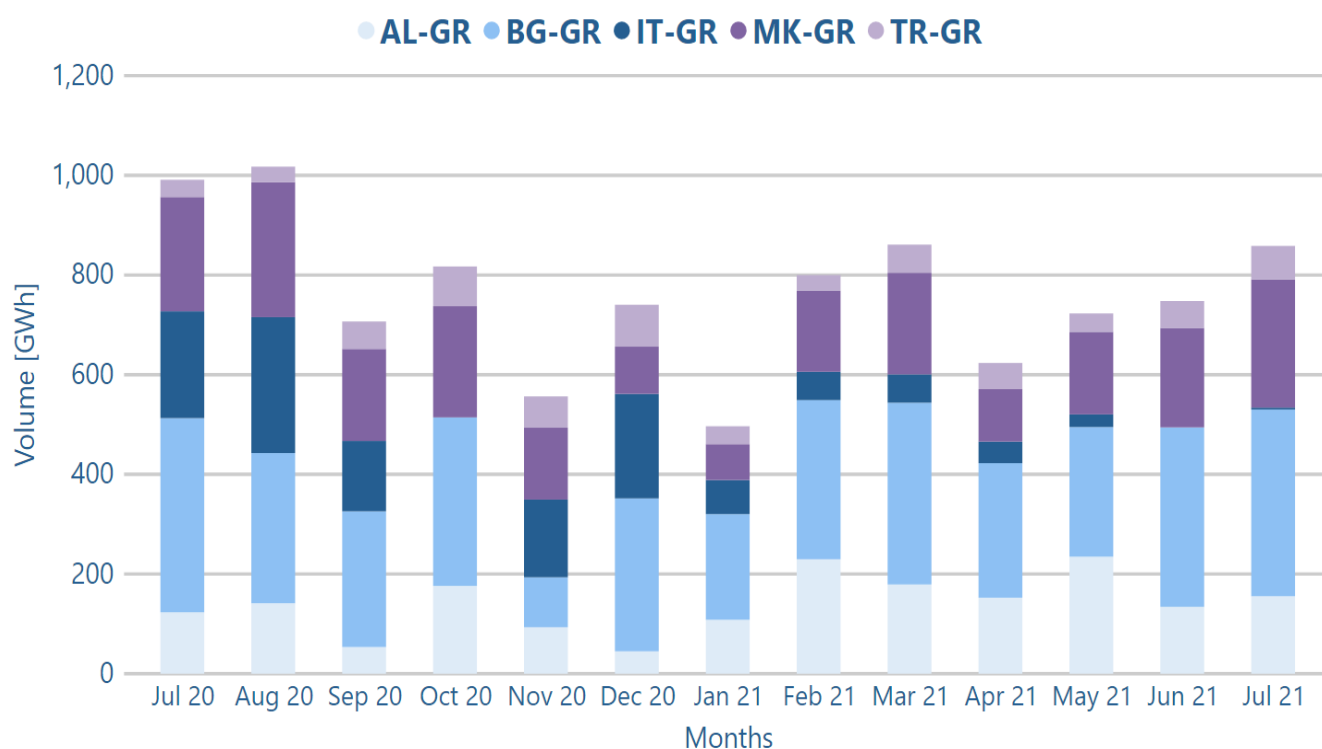
\*The Unmatched Orders include all buy orders that have not been included in algorithm.

## 1.15. Cross Border volume · Imports per day

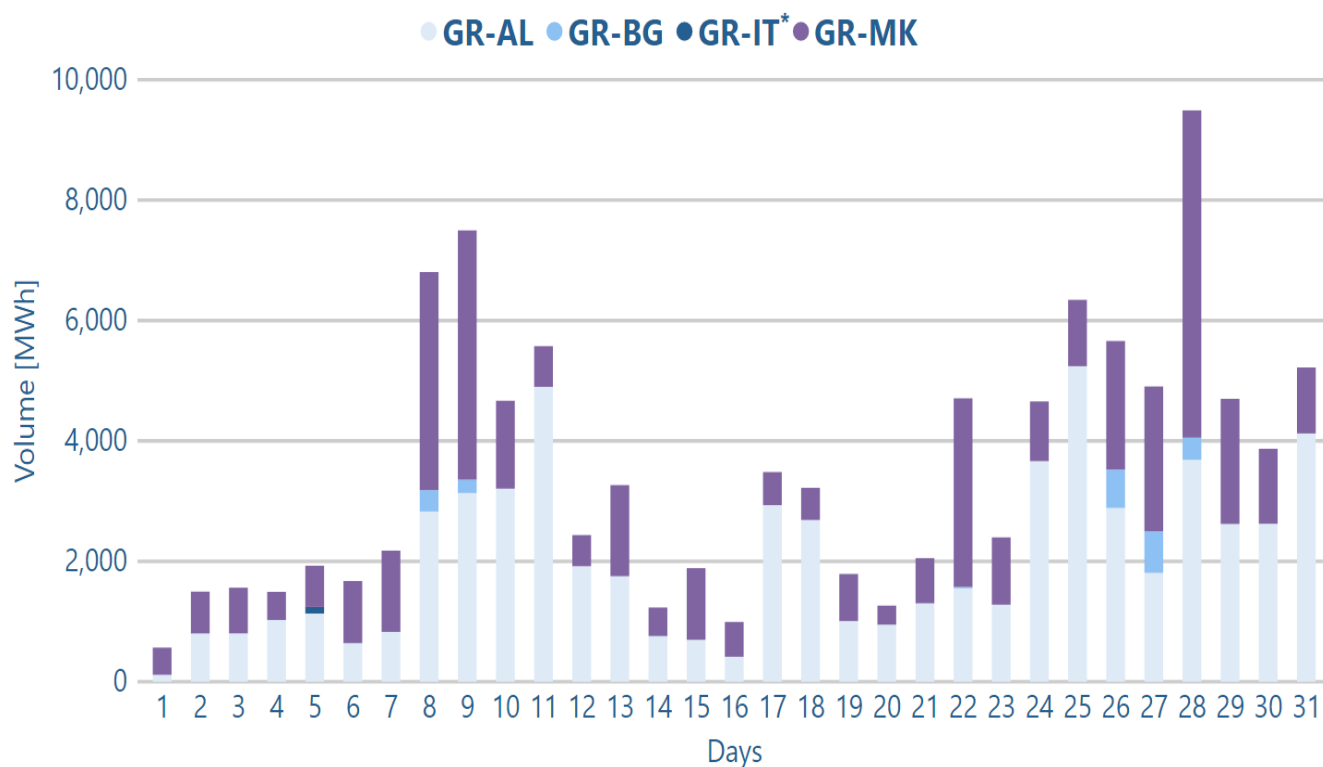


\*Interconnection with Italy had zero NTC except for 05/07 and 14/07.

## 1.16. Cross Border Volume · Imports per month

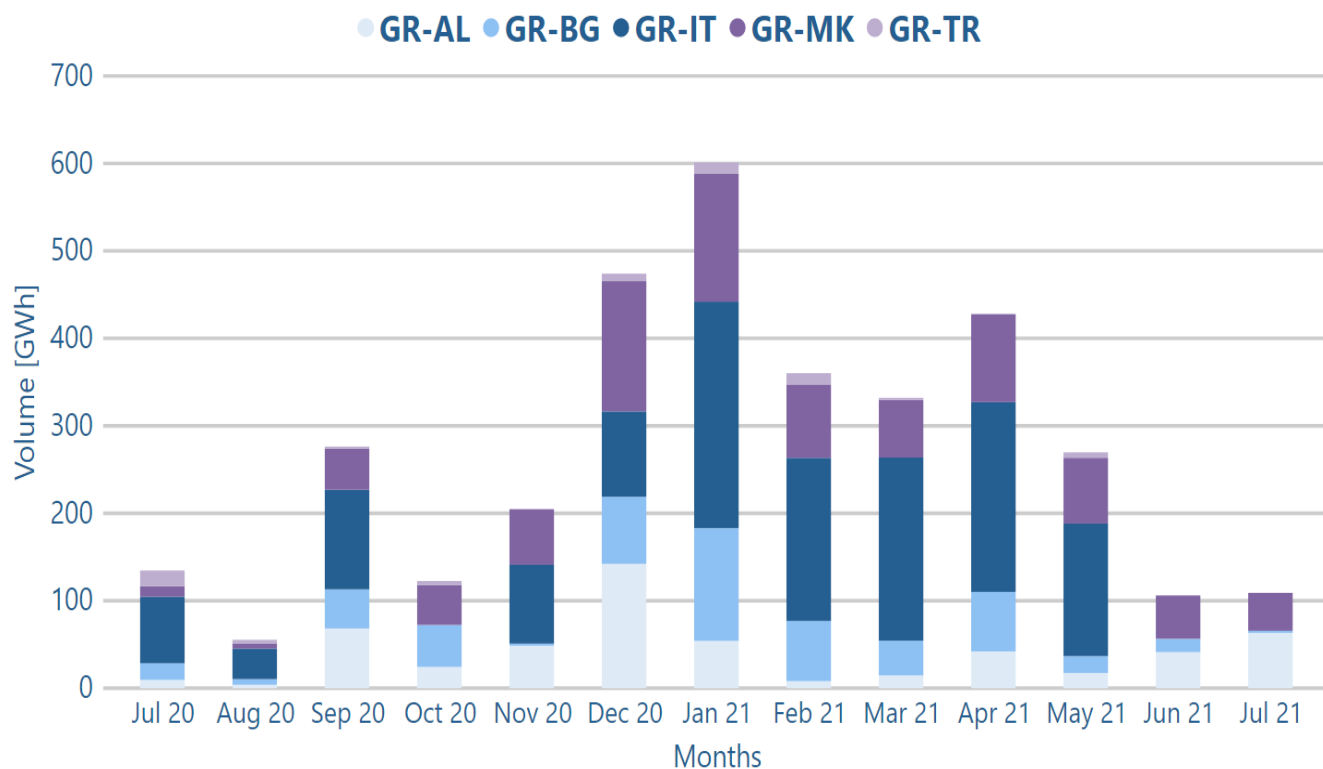


## 1.17. Cross Border volume · Exports per day

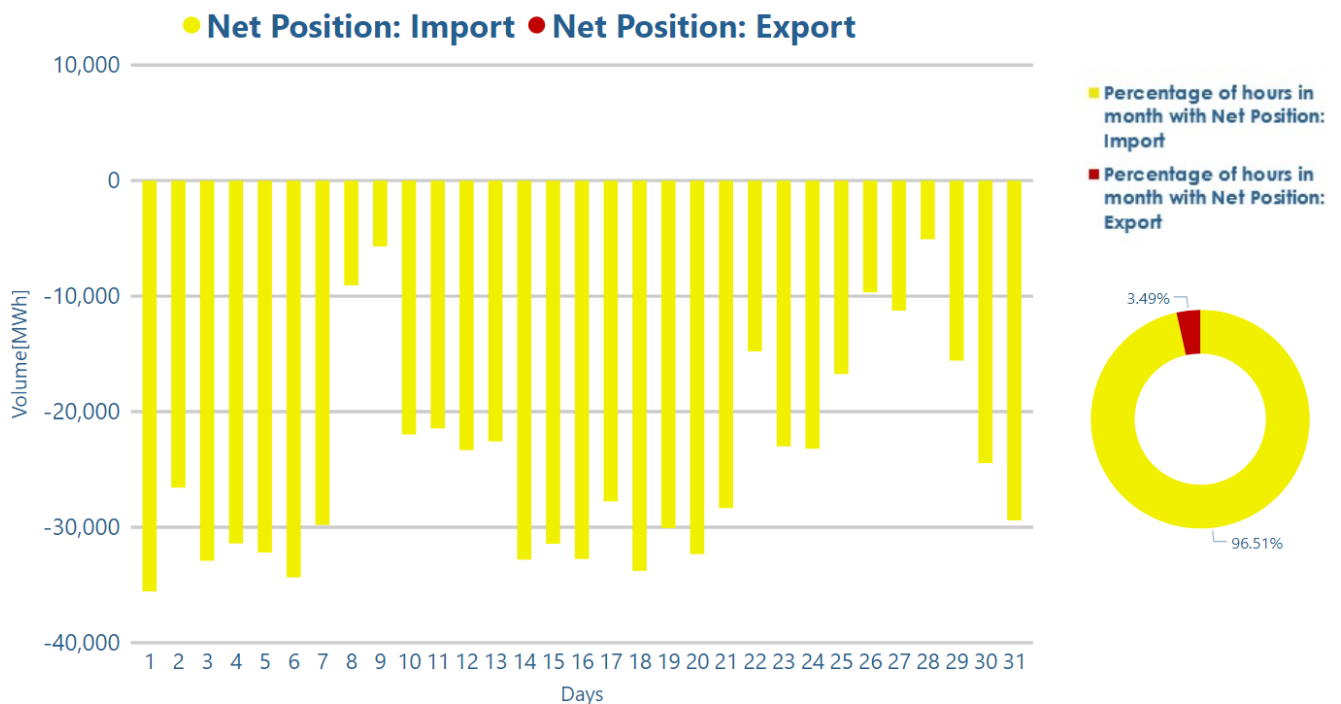


\*Interconnection with Italy had zero NTC except for 05/07 and 14/07.

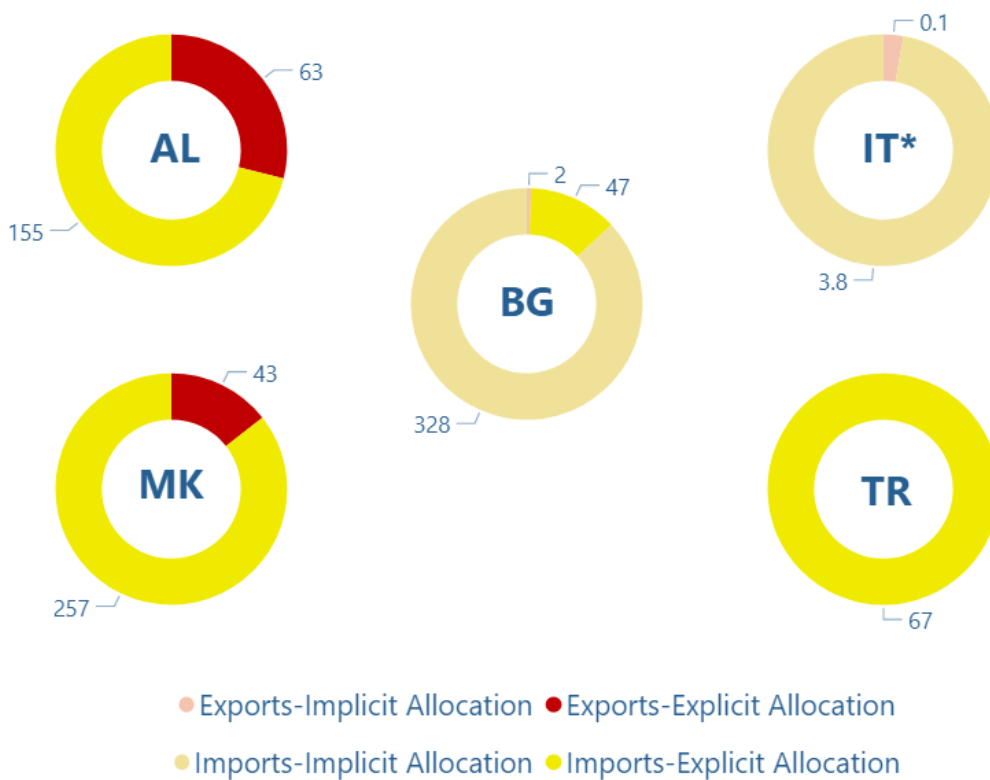
## 1.18. Cross Border Volume · Exports per month



## 1.19. Net position of all cross border flows

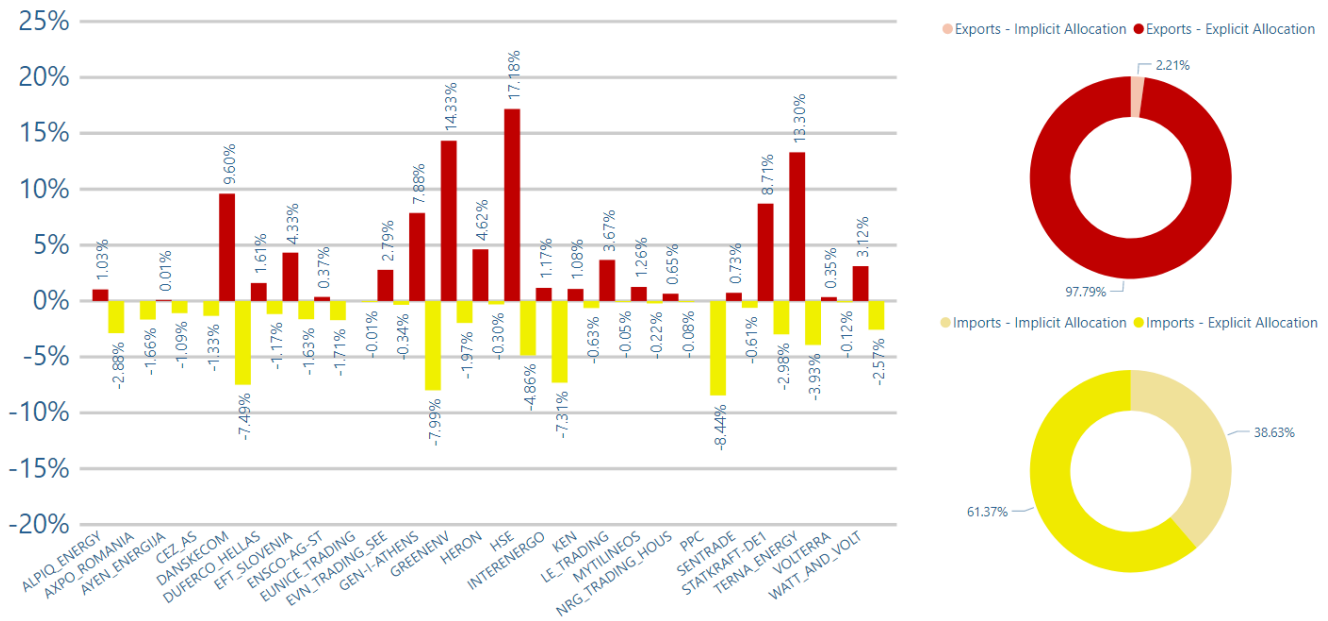


## 1.20. Cross Border Volumes (GWh) per Border

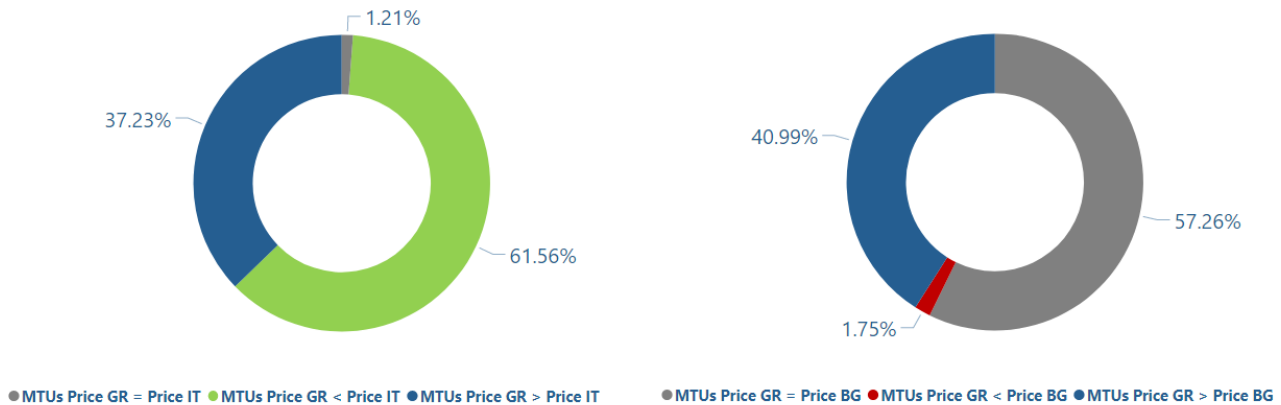


\* Interconnection with Italy had zero NTC except for 05/07 and 14/07.

## 1.21. Market Shares of Imports and Exports per Market Participant



## 1.22. Price Coupling Data



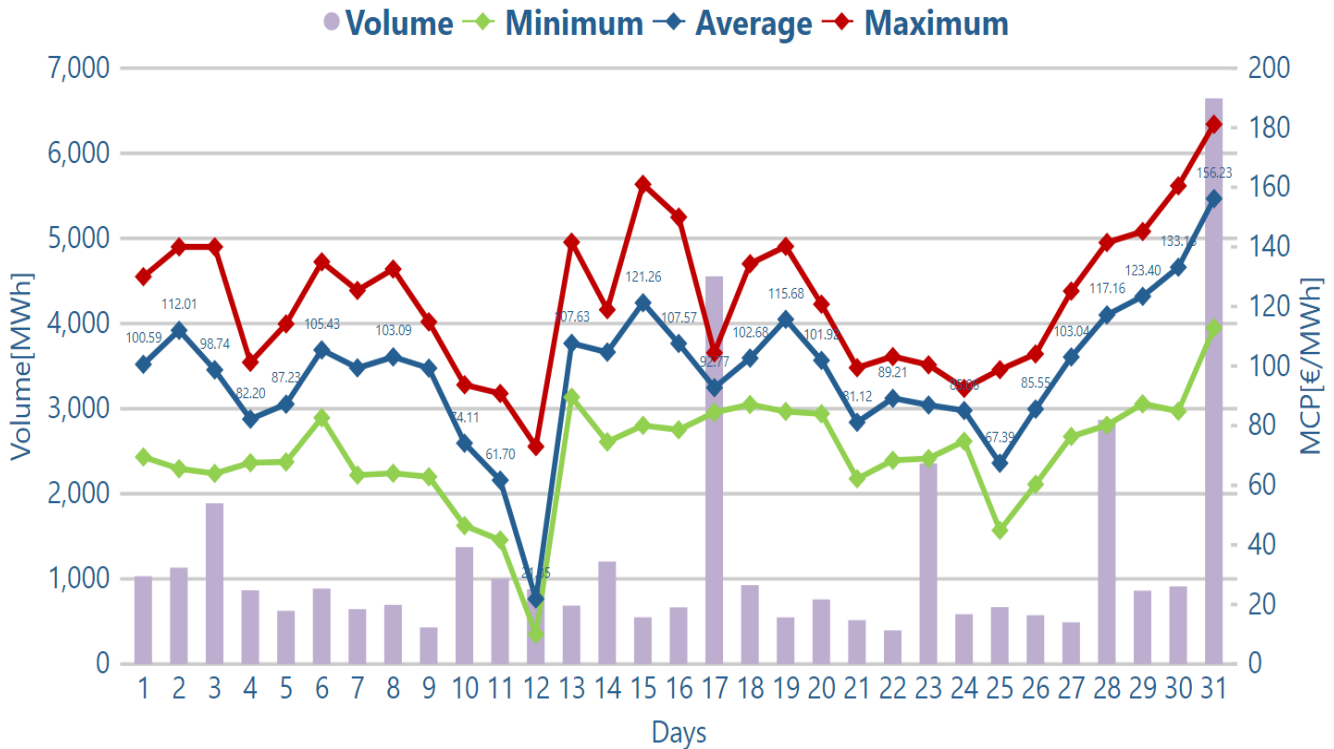


## 2. IDM

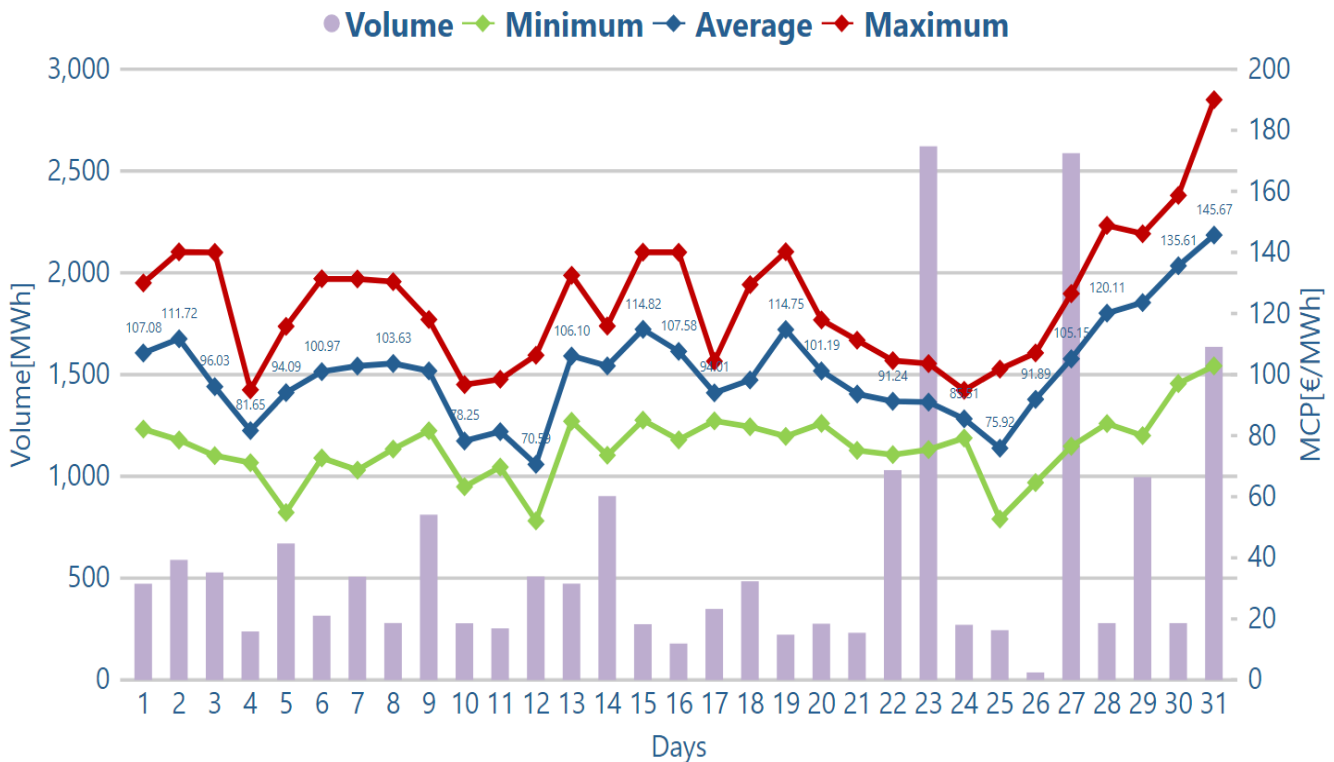
**Market Clearing Prices (MCP)**

**Volumes, technologies and order types**

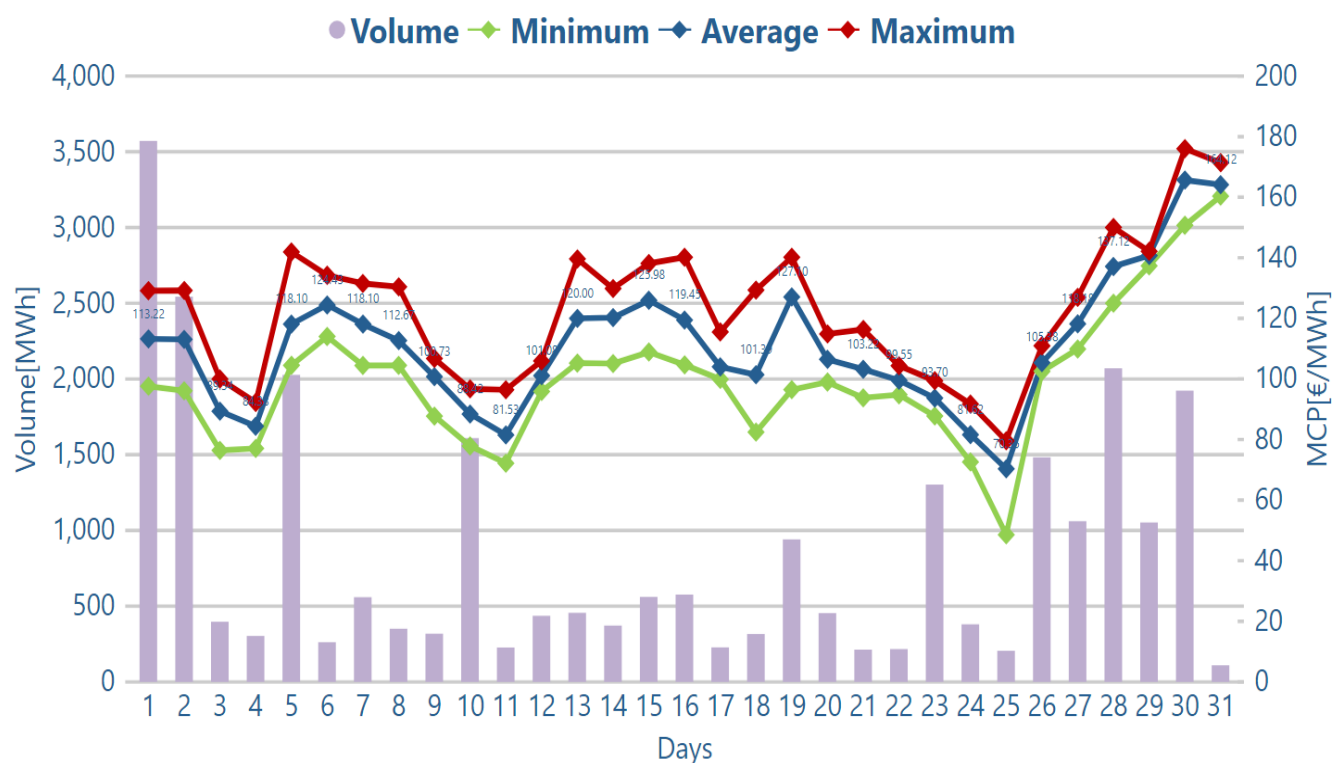
## 2.1. Daily MCP and volume · LIDA1



## 2.2. Daily MCP and volume · LIDA2



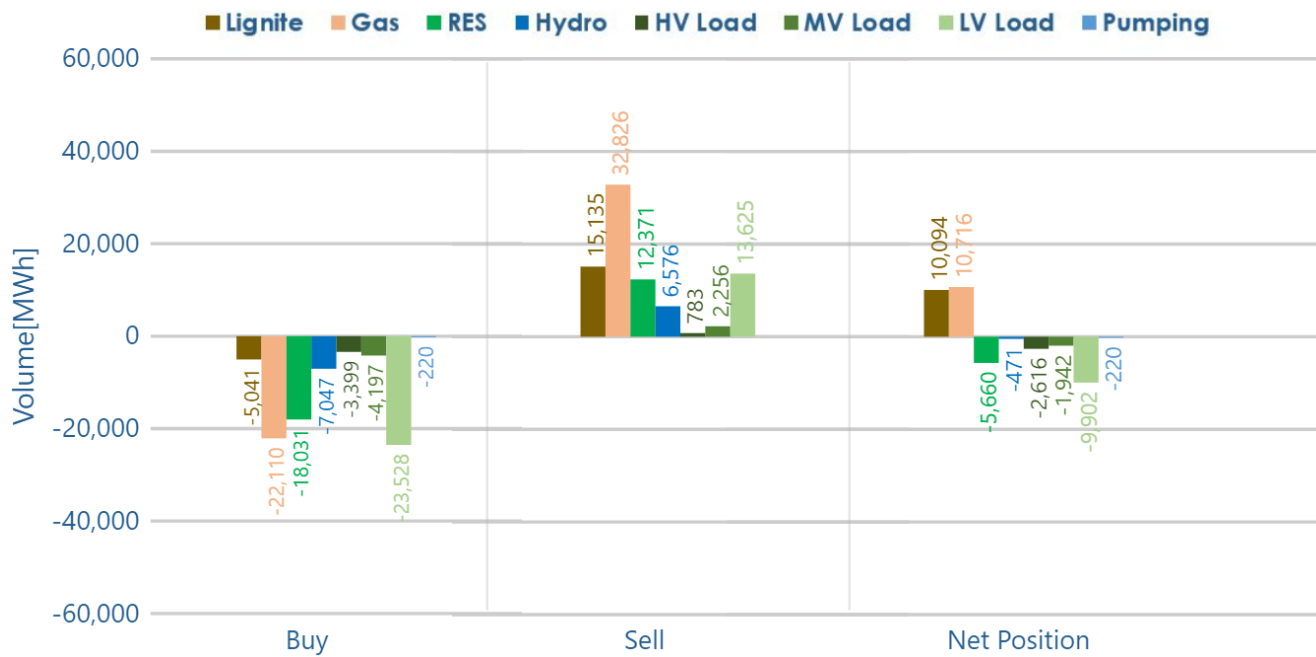
## 2.3. Daily MCP and volume · LIDA3



## 2.4. Table with MCP and volume

| Year  |               |     | 2020   | 2020   | 2021   | 2021   | 2021   | 2021   | 2021   | 2021   | 2021   |
|-------|---------------|-----|--------|--------|--------|--------|--------|--------|--------|--------|--------|
| Month |               |     | Nov    | Dec    | Jan    | Feb    | Mar    | Apr    | May    | Jun    | Jul    |
| LIDA1 | Price [€/MWh] | min | 5.1    | -1.2   | 0      | -1.01  | 3.01   | 5      | -7.90  | 21.34  | 10     |
|       |               | avg | 53.21  | 60.26  | 53.57  | 50.67  | 55.64  | 63.17  | 62.53  | 82.97  | 97.68  |
|       |               | max | 160    | 180    | 150    | 250    | 107.21 | 111.73 | 120    | 160    | 181.17 |
|       | Volume [MWh]  |     | 49,949 | 50,768 | 57,322 | 52,271 | 43,218 | 37,803 | 28,192 | 42,449 | 38,215 |
| LIDA2 | Price [€/MWh] | min | 16.34  | -10    | -19.92 | -8     | 1      | 5      | -0.01  | 5      | 52.10  |
|       |               | avg | 51.84  | 59.09  | 49.90  | 54.32  | 56.82  | 64.88  | 63.12  | 83.62  | 100.91 |
|       |               | max | 143.45 | 238.33 | 137.16 | 150    | 120    | 120    | 102.13 | 149.90 | 190    |
|       | Volume [MWh]  |     | 20,325 | 22,673 | 23,941 | 14,069 | 25,279 | 16,966 | 14,572 | 31,511 | 18,832 |
| LIDA3 | Price [€/MWh] | min | 0      | -16.09 | 0.01   | -5     | 3      | 10.50  | -3     | 31.88  | 48.59  |
|       |               | avg | 56.03  | 54.98  | 48.07  | 54.52  | 59.11  | 66.80  | 63.52  | 87.63  | 111.27 |
|       |               | max | 350    | 250    | 115    | 150    | 110.22 | 109.99 | 98.35  | 160.80 | 176    |
|       | Volume [MWh]  |     | 12,151 | 10,043 | 19,794 | 13,544 | 13,979 | 9,712  | 11,312 | 15,578 | 26,526 |

## 2.5. Volume mix per side and net position for IDM



### 3. DAM & IDM · Aggregated Overview

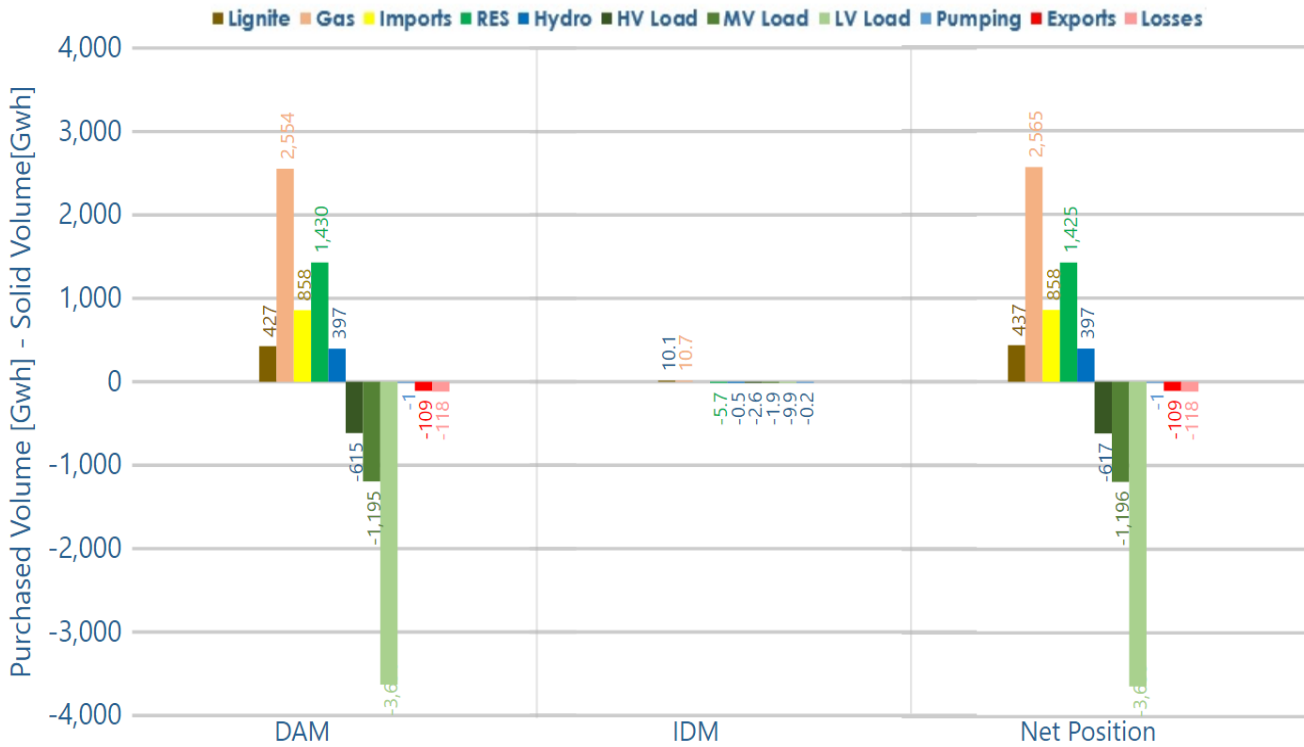
**Final Market Schedules**

**Domestic Production**

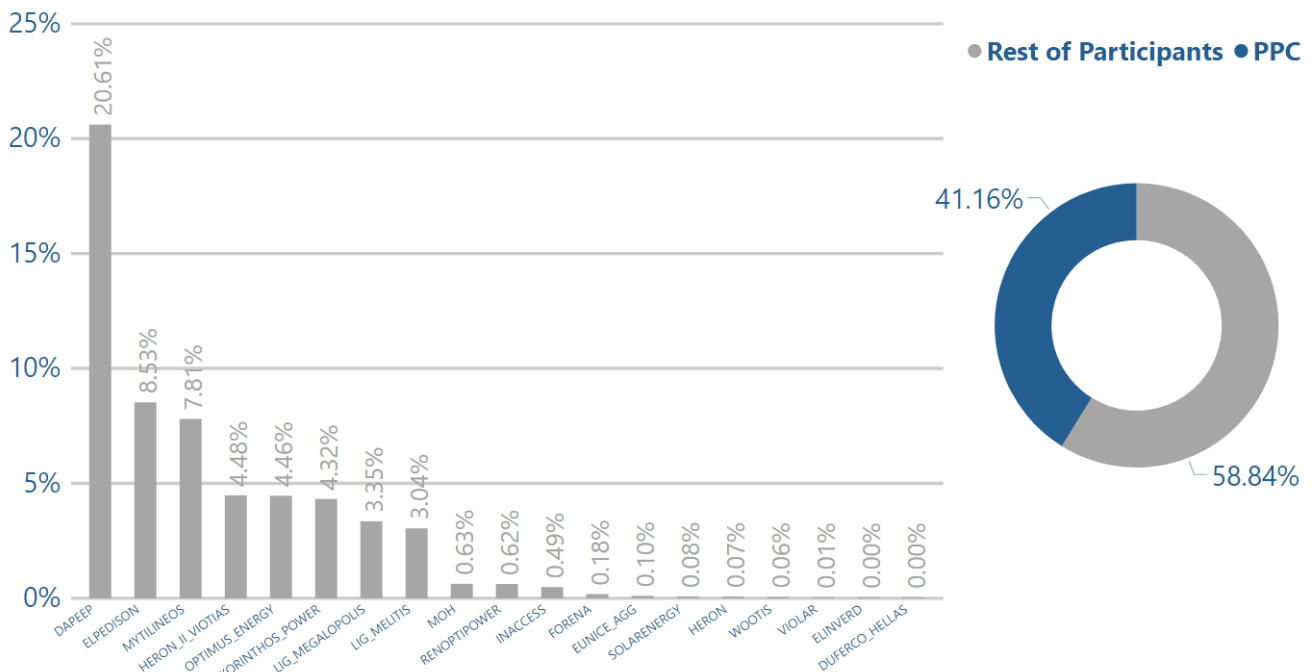
**Domestic Consumption**

**Domestic Consumption per Voltage level**

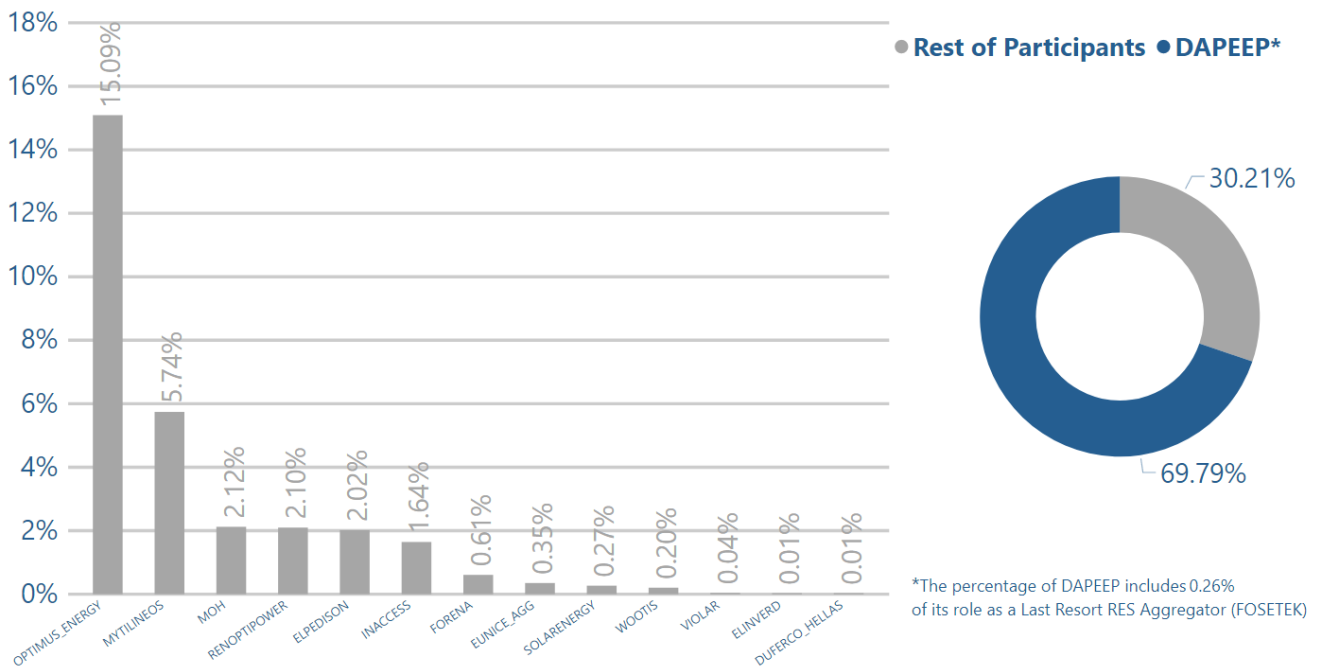
### 3.1. Market Schedules



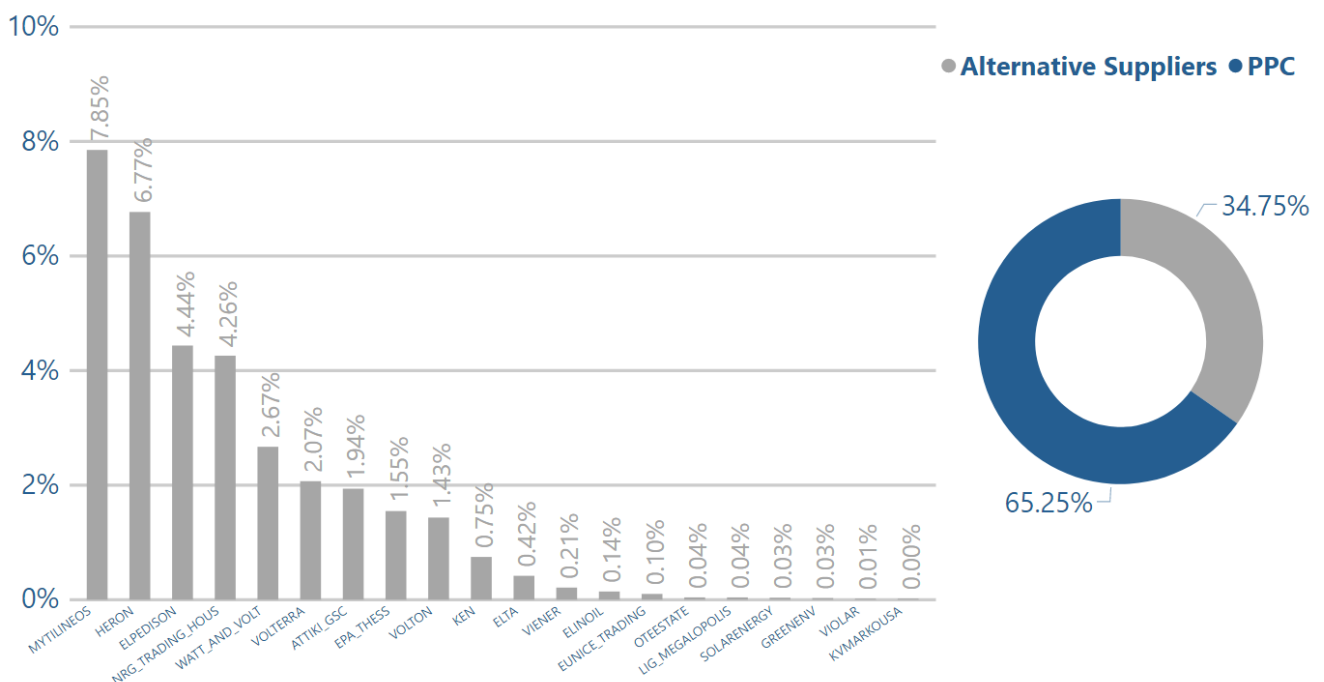
### 3.2. Final Market Schedule shares for all production units per Market Participant



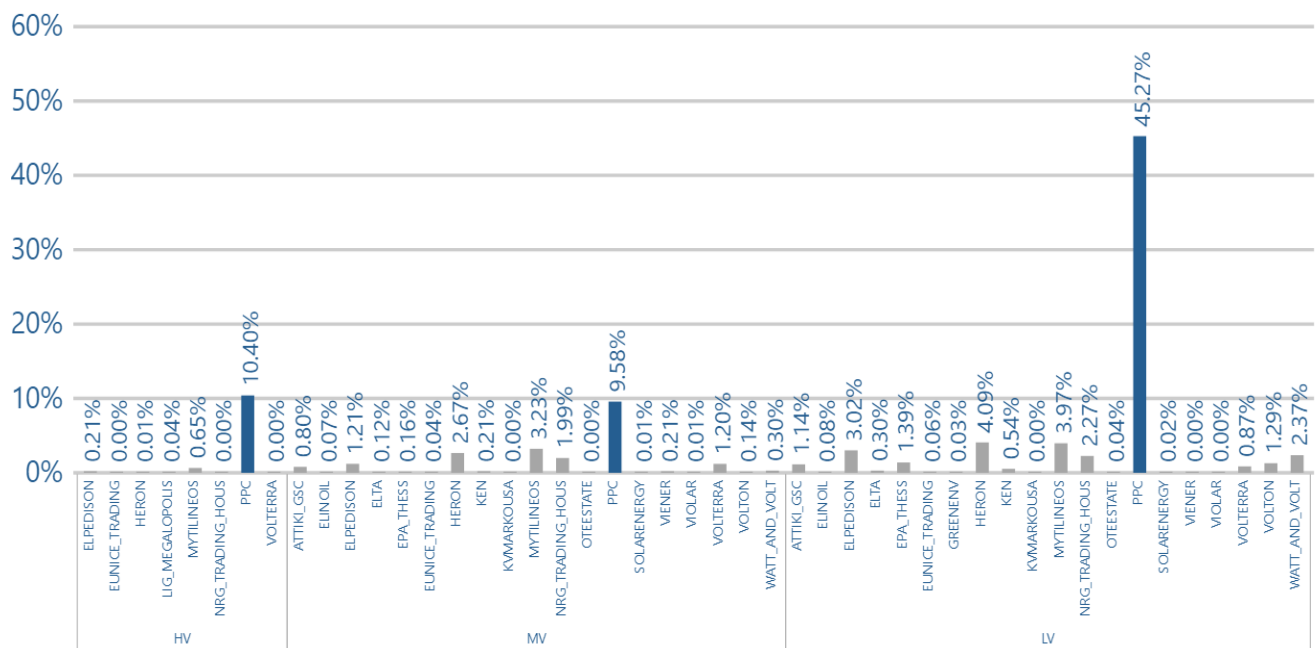
### 3.3. Final Market Schedule shares for RES production units per Market Participant



### 3.4. Final Market Schedules shares for domestic load per Market Participant



### 3.5. Final Market Schedule shares for domestic load per Voltage Level and Market Participant





## 4. Annex

### Definitions

| ACRONYM | Definition            |
|---------|-----------------------|
| GR BZ   | Greek Bidding Zone    |
| MCP     | Market Clearing Price |
| NTC     | Net Transfer Capacity |

### Data Sources

#### Figure 1.5

- Data source for MCP of Italy: <http://www.mercatoelettrico.org/En/Download/DatiStorici.aspx>
- Data source for MCP of Bulgaria: <http://www.ibex.bg/en/market-data/dam/prices-and-volumes/#data-table>

### Market Details

- The new Greek electricity market model, using the Pan-European Hybrid Electricity Market Integration Algorithm (EUPHEMIA), was launched from Delivery Day 01/11/2020
- Market Time Units of GR BZ are in CET-hr
- Intraday Market of GR BZ consists of three Local IntraDay Auctions (LIDA)

\*In this second version, figures for chart 1.22 have been updated to account for rounding differences